

SECURITY SYSTEM SOLUTION CATALOGUE

Technology Integrated
Security Software and
Hardware Solutions

**“By failing to prepare,
you are preparing to fail.”**

Benjamin Franklin

CONTENTS

ABOUT US	04
EXERA COMMAND CENTER	05
COMMERCIAL SECURITY SYSTEMS	06
CCTV / Video Surveillance System	07
Intruder Detection System	08
Perimeter Detection System	09
Access Control System	10
Panic Alarm System	11
Public Address (PA) System	12
Guard Tour System	13
In-vehicle Monitoring System (IVMS)	14
OFFICE SYSTEMS	
Visitor Management System	15
Meeting Room Booking System	16
LIFE SAFETY SYSTEMS	
Fire Alarm System & Smoke Detector	17
SECURITY ANALYSIS SYSTEM	
Vanguard (by Exera)	18

OUR MISSION

To be the trusted Risk Management partner to organizations operating in Myanmar by focusing on service delivery excellence and implementation of operational technologies.

OUR VALUES:

- Integrity and Ethics
- Excellence in Delivery
- Transparency
- Innovation
- Ownership

WHO WE ARE

- Established in 2012
- Part of Asia Strategic Holdings since 2018.
- High ambitions and solid growth
- About 2,000 employees guarding 220 sites nationwide. The largest private security workforce and the widest geographical coverage in Myanmar.
- Quality Standards: ISO 9001 & ISO 18788

KEY DIFFERENTIATORS

- Trained Site Security Personnel based on SIA (**Security Industry Authority, regulator of UK's private security industry**) with a focus on **ethics, use of force, and de-escalation** approach.
- Fully compliant with Labour Law, upholds Integrity & Ethics.
- The First company in Myanmar certified **ISO 18788** for private security operations.
- International expertise & International standards to run our operations and in training.



Exera Command Center

“EXERA Command Center: Remote Monitoring, Rapid Response, Central Communication & Information Dissemination for your Emergency Response Excellence!”

Our Command Center Manager, leads a team of dedicated professionals, ensuring seamless operation of the EXERA Command Center, from efficient communication to structured incident management. The Command Center is committed to delivering safety and security management solutions through professionalism and team work.

Operating 24/7, our Command Center serves as the hub for emergency coordination, incident monitoring, response and management. It acts as a central communication center and is equipped with remote CCTV monitoring, GPS tracking of vehicles and efficient call center response.

Contact our Exera Command Center now for unparalleled security and rapid response!





Commercial Security Systems

“Protect your Business with Cutting-Edge Security Solutions!”

Exera offers a fully inclusive service to provide 24/7 protection of your business premises.

Technology Integrated Solutions using: Advanced Video Analytics, Biometric Access Control, and Customizable Security Systems act as an effective deterrent to potential threats, offering you peace of mind for the security of your business.

We offer a wide range of systems and services such as:

- CCTV
- Intruder Alarm System
- Perimeter Detection
- Access Control System

- Panic Alarm System
- Public Address (PA) and Voice Alarm
- Visitor Management System
- Guard Tour System
- Maintenance

[Contact us today for a thorough Security Assessment!](#)



Video Surveillance System

CCTV System: remote eyes for management and the security force. Safeguard your assets with state-of-the-art technology and reliable detection capabilities, offering round-the-clock surveillance.

“Protect your Business with Advanced Features of CCTV Systems!”

Key Features:

- **AI Video Analytics** – focus on human and vehicle detection, together with multiple event rules including region entrance, object removed, loitering, etc.,
- **People Counting** – high accuracy and real-time data based on AI algorithm, with statistic reports for further analysis.
- **Advanced Heat Map** – analyzes customers’ behavior to reveal insights for better business management.
- **Advanced Built-in Microphone** – Network Camera is able to provide a high quality sound.

Contact us today for a customized solution tailored to your specific needs!





Intruder Alarm Systems

We design, supply and install intruder alarm systems, that offer remote monitoring and control as well as EXERA mobile patrol service.

“Protect your Business with Advanced Intruder Alarm Systems!”

Objective: To detect an intruder while attempting to enter through activation of an audible or visual alarm on-site as well as an alert to the alarm monitoring station, handled by trained operators as predetermined by the customer.

Intruder Alarm System:

Include various devices such as door contacts, glass break sensors, motion detectors, sirens, and strobes.

Key Features:

- Enhanced security of assets and people
- Real-time notification of abnormal activity
- Instant response to problems
- Deterrent for criminals and troublemakers
- Integration with security accessories
- Remote monitoring and surveillance

Contact us today for a customized solution tailored to your specific needs!



Perimeter Detection Systems

We introduce the ultimate protection of your property—an electronic fencing system designed to detect and deter intruders from attempting to cut or climb the fence or wall.

“Build Secure Boundaries with Perimeter Detection System!”

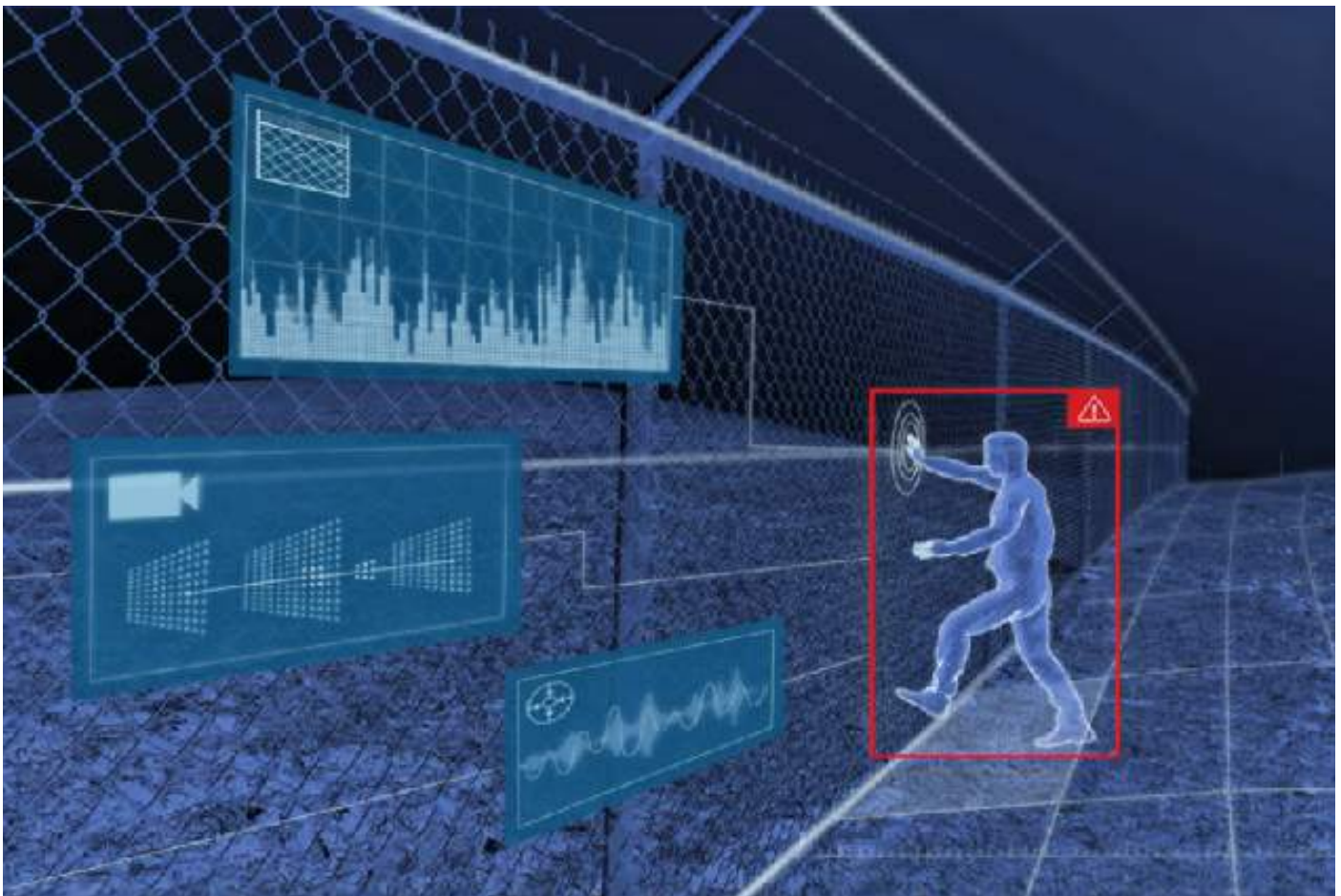
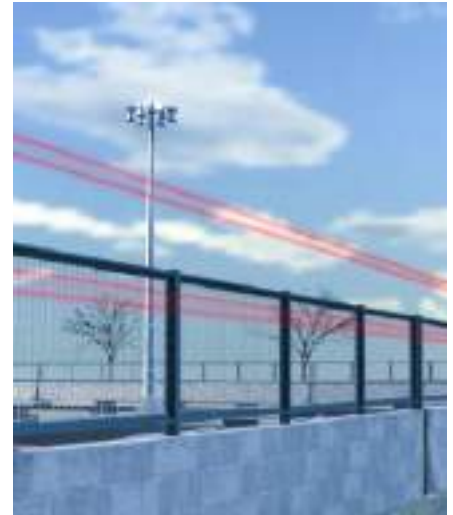
Objective: Perimeter Detection Systems used in an external environment to detect the presence of an intruder attempting to breach a perimeter.

Benefits: This advanced technology plays a crucial role in protecting high-risk sites, commercial real estate, and industrial space in both urban and remote locations.

Key Features:

- Advanced accuracy for high security requirements
- Excellent adaptability, easy to deploy and control
- Consistent, clear video footage for easier post-event investigations
- All-weather target detection, reducing labor costs
- High-powered loudspeaker for effective deterrence

[Contact us today for a technical survey to enhance your security system!](#)





Access Control Systems

Access Control system is an electronic security system which either grants or denies entry to your premises, by determining the identity of the person. We provide various solutions for secured access control using Pin, Bio, Card or Facial recognition technology.

“Secure your Space with Precision – Access Control Defined!”

Objective: The key objective is to secure physical access to your buildings or sites as well as to have full control and log who is entering which area and when.

Benefits: The access control solution offers rapid passage through multiple verification and identification technologies and provides complete measures for specialized scenarios with high-security requirements and emergency protocols.

Our Products include:

- Door Access
- Lift Access
- Turnstile Access
- Flap Barrier Access
- Gate Barrier Access

Contact us today to achieve an efficient passage, uncompromised security – access control at your premises!

Panic Alarm System

We introduce a panic alarm system to ensure the user always has access to the help they need during an emergency. The solution can be connected to our Exera Command Center for immediate response.

“Instant Safety at your Fingertips - Panic Alarm for your Peace of Mind!”

Objective: To provide quick and efficient means for individuals to request immediate assistance or alert others in critical situations.

Benefits: In any critical situation such as medical emergencies or security threats, the system is designed to offer rapid response and enable a swift and coordinated reaction to any incidents.

Key Components:

- Panic button
- Communication system

[Contact us for a consultation to get the alarm solution you need for your peace of mind!](#)





Public Address (PA) System

Emergency Public Announcement System and Voice Alarm system are most useful in multistorey buildings and large premises to provide occupants with clear and concise messaging either in relation to day-to-day activities or in the event of an emergency when employees need to safely evacuate the premises.

“Elevate your message with our Public Address System!”

Objective: To be heard and be clear – the best way to convey the message to a large group of people.

Benefits: Improved communication, enhanced safety, cost-effectiveness, flexibility and versatility. The system can be integrated with other communication tools.

Key Features:

- To provide a broadcasting/scheduling function to play the announcement to different areas.
- External alarm triggers and evacuation message.
- Broadcasts different announcements for the hall, conference room & office room etc.,.
- Supports integration and control of third-party systems.
- Enables interaction with on-site security equipment.
- Can be integrated with a Fire Alarm System.

Amplify your voice, amplify your impact! Contact us today to explore the features of Public Address System.

Guard Tour System

We include the Guard Tour System (GTS) in our security solution package to achieve monitoring of guards and patrol tours in real-time, ensuring the safety of the guards and patrolling is completed according to the organization's security SOP.

Exera can provide GTS solutions based on both **handheld devices** and **cloud-based solutions**.

"Guard Tour System: Ensuring Accurate Security and Lone Worker Safety!"

Objective: GTS provides verifiable proof that security personnel have visited the patrol points at predetermined times, offers accountability, and transparency and enhancing lone worker safety.

Benefits: Real-time monitoring, onsite immediate incident reporting, proof of presence, lone worker safety and provision of data and analytics.

- GTS alerts you if scheduled patrols are missed or an incident is logged.

Key Features:

- Data Collection – collects data from completed security patrols
- Reporting – Multiple reporting options including patrols, events, exceptions, and more
- Reader with IP-68 Sealing lets you work in wet conditions
- Battery Life – GC-01 long battery life up to 6 months or 300,000 readings

Invest in Guard Tour System to take control of your security and to ensure their safety!



In-Vehicle Monitoring System (IVMS)

For real-time monitoring of Clients' vehicles fleet. The system is based on 2G GPS tracking of a vehicle-attached device.

The Exera Command Center can monitor the movements of the client's vehicles on a 24/7 basis and react to notifications such as overspeeding, unnecessary idling over limits and others.

"Your Safety, Our Priority: Stay Connected with In-vehicle Monitoring!"

Objective: To ensure the overall safety of the personnel on board and high-value items in the vehicle. To empower organizations to achieve holistic operational efficiency

Benefits: Improve passenger safety through tracking & analysis of driver behaviour. Support cost-saving, increase fuel efficiency and reduce mechanical wear.

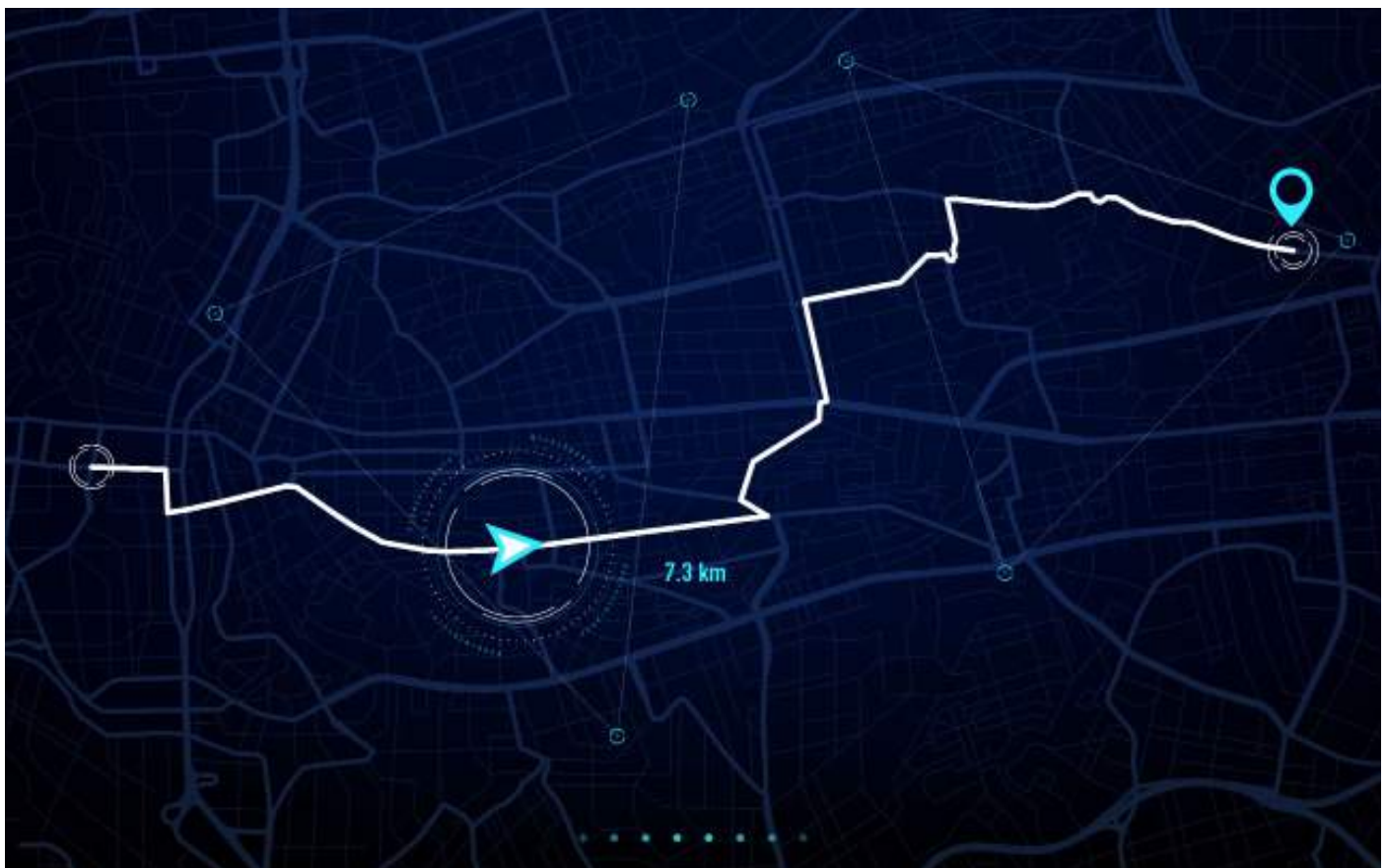
Key Features:

- **Vehicle Violation Notifications:** Speeding, Idling over set limits, Harsh braking/ Acceleration/Turn, Fuel theft, Geo-fence violation
- **Detailed trip report & alerts:** Trips taken, kilometres driven, kilometres per trip, location of the vehicle (initial/

final), geo-fence violation

- **Real-time vehicle control, detailed reporting and alerts:** Speed limits, Operating time limits, Idle time, maintenance system, hours of operations, fuel usage & KPL by make, model, agency, year. Odometer readings and engine hours.

Take Control of your Fleet's Future - Install GPS Tracking in your Vehicles Today!





Visitor Management System

We introduce a visitor management solution which provides a vastly improved experience for users and guests while ensuring the safety & security of the personnel and property.

“Security Starts at the Gate: Your Trusted Partner in Visitor Management!”

A Visitor Management System is a technology used to track visitors in a formal way.

Key Features and Benefits:

Receptionist Service

- Guests and visitors can quickly check in, with no need to wait in line at reception.
- Visitors can easily access rooms and doors within permitted areas.

- Visitors are prevented from bringing in dangerous items or removing anything that does not belong to them.
- Unwelcome persons can be restricted from entering.

Self Services

- Reduces the labour costs involved in receiving business partners, guests, visitors, deliveries, and more.
- Streamlines the visiting process and frees up administrative resources.
- Makes an impression on visitors with its modern, touch-screen system.

Secure your space, Invest in Visitor Management Today !



Meeting Room Booking System

“Unlock Efficiency, Book Smarter: Elevate Your Meetings with our Booking System!”

Securing the meeting space you need, at the time you need it, has never been easier. You can find a suitable space and time, check all attendees are available and make a booking in moments.

Protect what matters most: Contact us for a site survey and invest in fire safety.





Life Safety Systems

Life Safety Systems are made up of elements that are designed to protect your building and its occupants during a fire or emergency situation. Exera can provide an integrated and fully functioning **Fire Alarm (Conventional / Addressable) System**.

"Your Safety, Our Priority: Trust in Our Fire Alarm Systems!"

Key Features:

- Fire Alarm system that fully integrates with Public Address System and any other safety sensors on the property.
- Fire detectors can be heat, smoke or carbon monoxide sensors.
- Most advanced fire alarm systems have a sleek design and more pleasant audio warnings that don't build upon the panic that's already there.

- Supports integration and control of third-party systems.

[Protect what matters most: Contact us for a site survey and invest in fire safety.](#)



Vanguard: Security Analysis System

As part of our strategy to become the most integrated Risk Management services provider in Myanmar, we have developed Vanguard, an advanced Security Analysis System helping organizations make the right security-related decisions as well as the relevant business and operational decisions.

“Vanguard: Your Trusted Risk Management Partner, EXERA!”

Vanguard System: probably the most extensive and detailed database in the country since the beginning of 2021. It is constantly enriched by Exera analysts who monitor multiple information platforms on a daily basis.

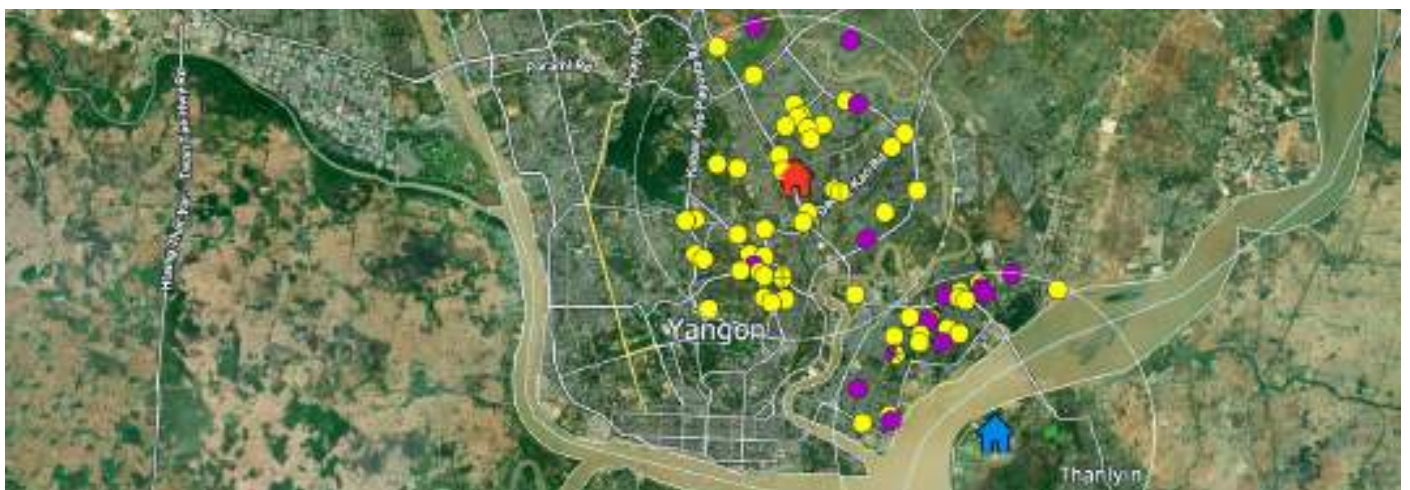
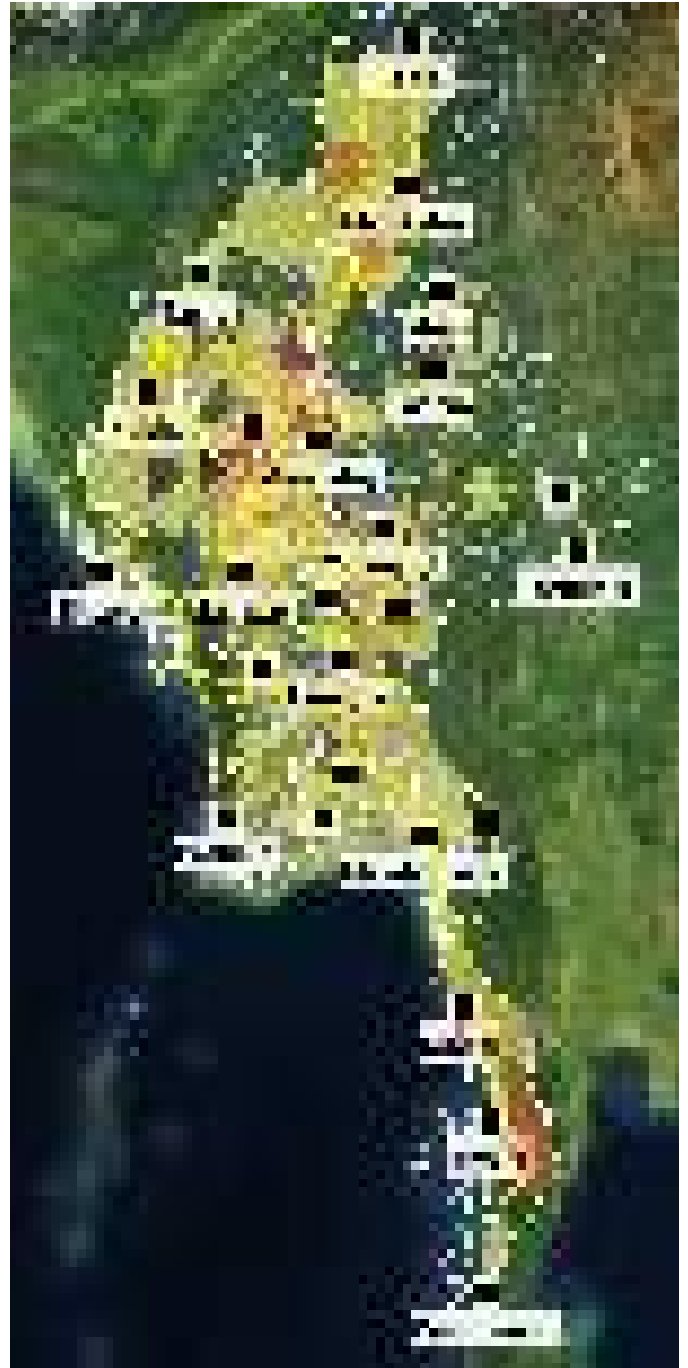
Key Features:

Interactive Mapping:

through a range of precise filters, organizations can display only incidents that matter to them:

- Time and Customized date range
- State/Region (15 choices)
- Township (330 choices)
- Type of incident (20 choices)
- Type of target (50 choices)

“Stay informed, Stay secure – Subscribe to our Daily/Weekly Security Report for Enhanced Awareness!”



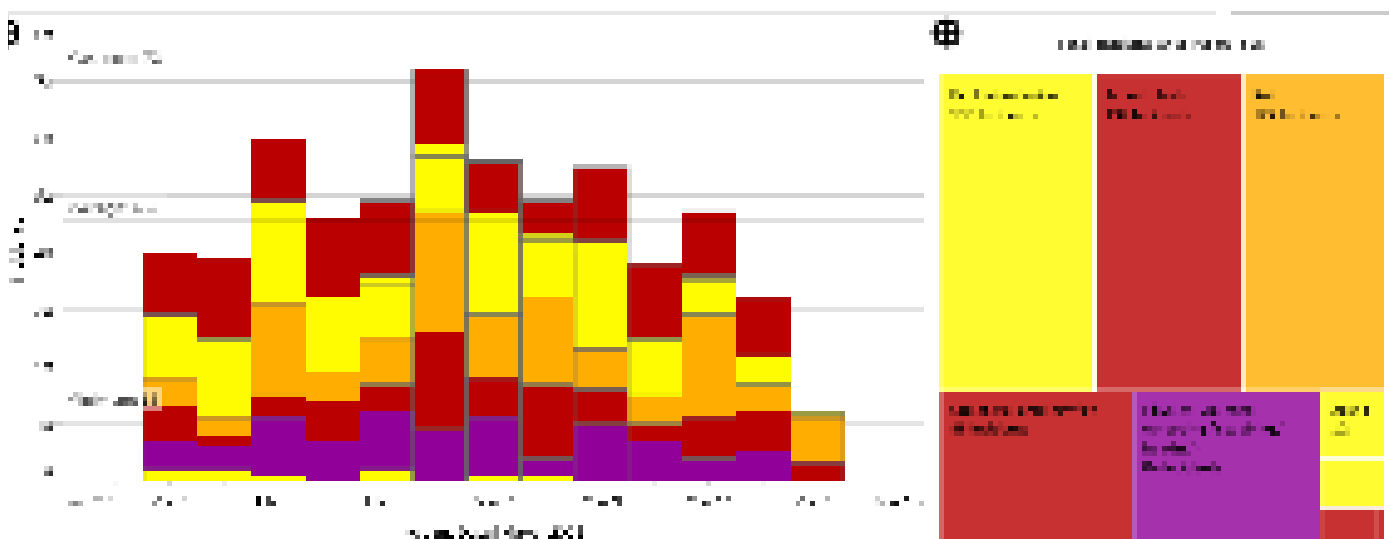
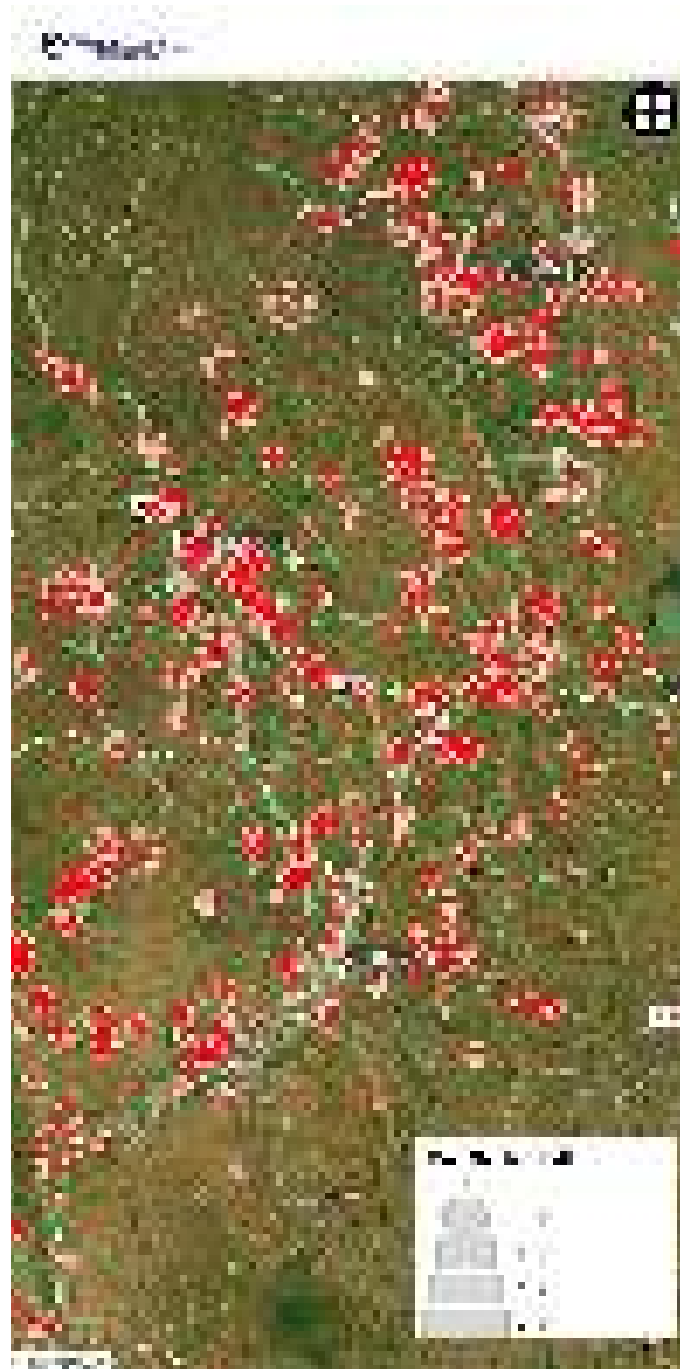
Advanced Security Dashboard:

Vanguard analytics provides meaningful insights and highlights trends. Based on the set of filters available, the system will display a wide array of infographics, including:

Key Features:

- Timeline of incidents
- Top 10 of the States/Regions, townships, towns and villages most affected by security incidents
- Precise human toll breakdown (civilians, security forces, resistance fighters, etc.)
- Breakdown of all parties and outfits involved; a fact sheet about each of them;
- Comparison tool, allowing to display of two different maps side by side to highlight contrasts and trends.
- Organization's Points of Interest dashboard: count and timeline of incidents near the points of interest, human toll, distance, etc.
- Animated, fast-forward visualization of incidents that allows one to better grasp how conflict evolves, shifts, moves
- Customizable heat map which gives you an understanding of the security situation at a glance.

"Stay ahead of the curve – Subscribe to Vanguard today and dive into the current security trends for your business!"





Contact Us: (+95) 9775 111 551 | enquiry@exera.asia

Building No. 3A, Min Ye Kyaw Business Building,
Min Ye Kyaw Swar Street, Lanmadaw Tsp. Yangon